




WOODLIN ELEMENTARY SCHOOL PTA 
HOME OF THE WIZARDS

PTA Meeting

February 7, 2023



**School Update - Welcome back
Mr. Jackson!**

Fundraising

Annual Online Auction *April 15th-29th, 2023 - VOLUNTEERS NEEDED*

The Auction raises critical funds to support our students, teachers, and staff. Community members and local businesses donate amazing items – vacation rentals in Ocean City, teacher-led parties, handmade jewelry, tickets to Nats game, and much more - which are listed on our online catalog for everyone to bid on.

Snider's Receipts *Collecting all receipts dated 2022 until February 10th, 2023.*

For every dollar spent at Snider's, the PTA receives a check for one percent. Past years have raised more than \$1,200 from parents and other community members who turned in their receipts!

Amazon Smile Shop at smile.amazon.com with Woodlin Elementary as your registered non-profit until **February 20th, 2023**. Amazon is closing out this giveback program so get your shop on before it ends!

Capacity Relief Plans for Einstein Cluster

Woodlin Elementary School

Year Facility Built: 1944
 Last Renovation: 1974
 Gross Floor Area: 60,725 sq.ft.
 Site Size: 10.97 acres
 Relocatables in 2021: 7

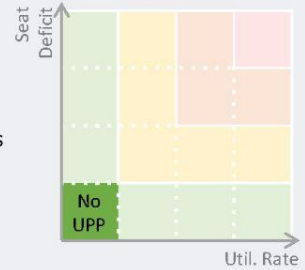
Adjacent Schools

Rock Creek Forest ES
 Rosemary Hills/Chew Chase ES
 Rosemary Hills/N. Chew Chase ES

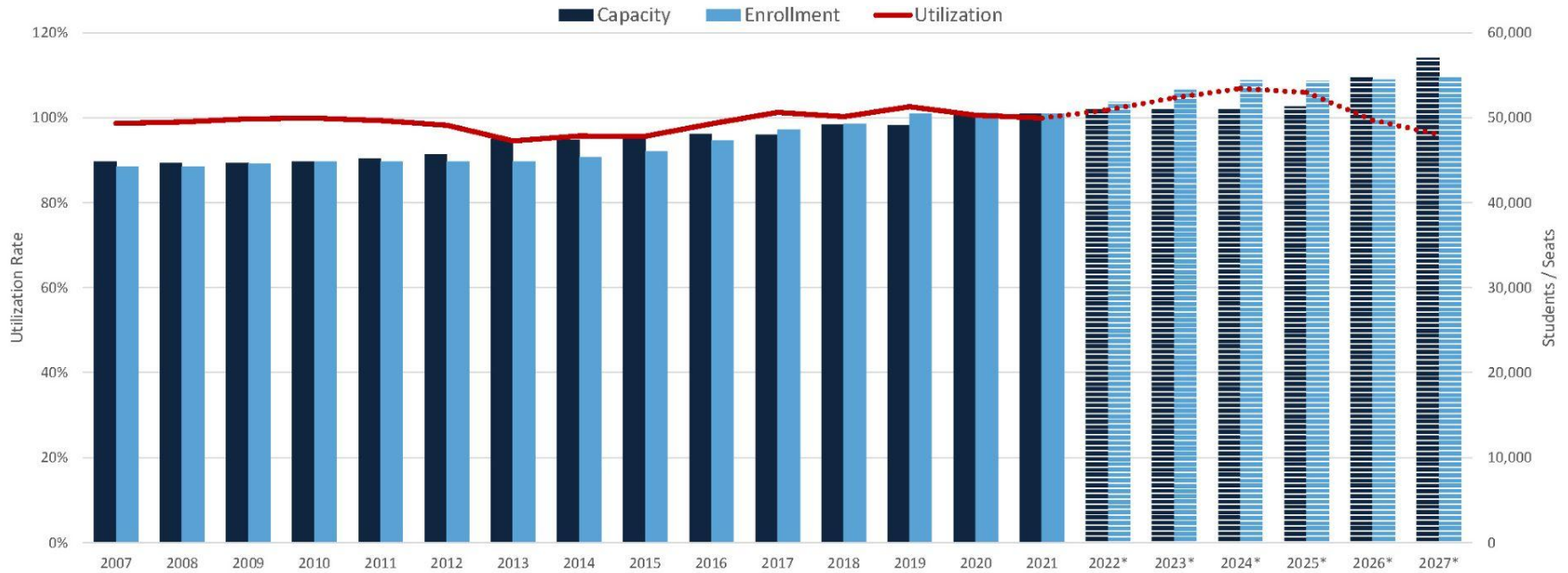
Flora M. Singer ES
 Sligo Creek ES

FY23 Annual School Test

- 4-Yr Projection
 - Utilization : 84.7%
 - Seat Surplus : 100
- Capacity projection assumes completion of Major Capital Project in 2023.



High Schools – Countywide Enrollment/Utilization Trend



School Year	2007	2008	2009	2010	2011	2012	2013	2014	2015	2016	2017	2018	2019	2020	2021	2022*	2023*	2024*	2025*	2026*	2027*
Capacity	44,864	44,701	44,694	44,855	45,149	45,666	47,436	47,402	48,062	48,026	47,969	49,195	49,147	50,253	50,489	50,916	50,916	50,916	51,254	54,850	57,051
Enrollment	44,245	44,239	44,577	44,828	44,837	44,838	44,854	45,368	45,964	47,325	48,546	49,315	50,432	50,519	50,434	51,868	53,282	54,417	54,311	54,523	54,811
Utilization	98.6%	99.0%	99.7%	99.9%	99.3%	98.2%	94.6%	95.7%	95.6%	98.5%	101.2%	100.2%	102.6%	100.5%	99.9%	101.9%	104.6%	106.9%	106.0%	99.4%	96.1%
Enrollment Growth	-282	-6	338	251	9	1	16	514	596	1,361	1,221	769	1,117	87	-85	1,434	1,414	1,135	1,029	106	500

* MCPS projection.



DOWNCOUNTY CONSORTIUM

Projected Enrollment and Space Availability

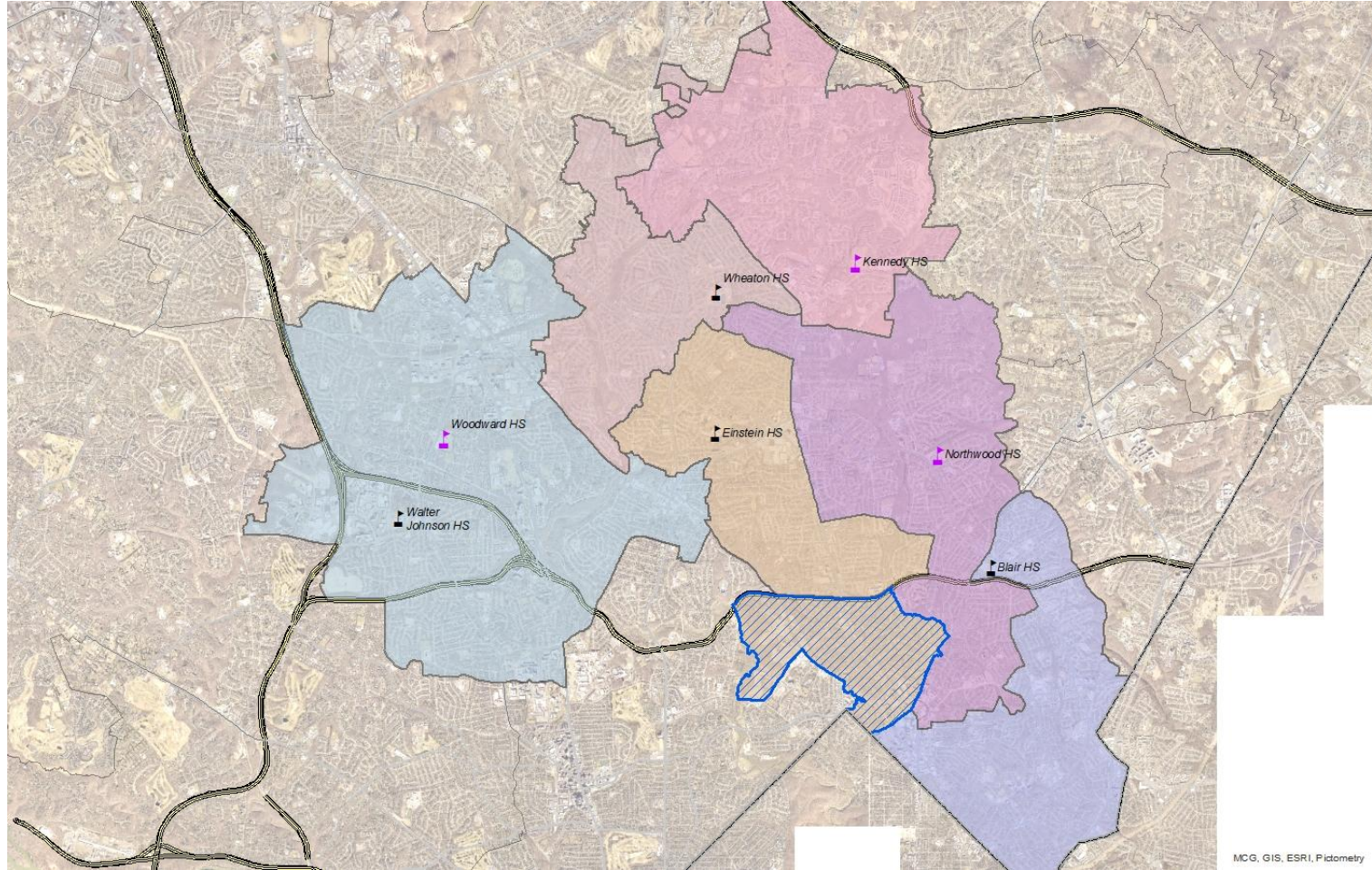
Effects of the Superintendent's Recommended FY 2024 Capital Budget and Amendments to the FY 2023–2028 Capital Improvements Program

Schools		Prelim.	Projections							
		22-23	23-24	24-25	25-26	26-27	27-28	28-29	2032	2037
Montgomery Blair HS	Program Capacity	2867	2867	2867	2867	2867	2867	2867	2867	2867
	Enrollment	3175	3252	3355	3445	3449	3497	3544	3550	3550
	Available Space	(308)	(385)	(488)	(578)	(582)	(630)	(677)	(683)	(683)
	Comments	See Text								
Albert Einstein HS	Program Capacity	1802	1802	1802	1802	1802	1802	1802	1802	1802
	Enrollment	2000	2104	2099	2084	2067	2097	2129	2140	2140
	Available Space	(398)	(502)	(497)	(482)	(465)	(495)	(527)	(538)	(538)
	Comments	See Text								
John F. Kennedy HS	Program Capacity	2159	2159	2159	2159	2159	2159	2159	2159	2159
	Enrollment	1849	1886	2096	2177	2159	2193	2227	2240	2240
	Available Space	310	273	63	(18)	0	(34)	(68)	(81)	(81)
	Comments	Addition Complete/ See Text								
Northwood HS	Program Capacity	1528	1528	1528	1528	2260	2260	2260	2260	2260
	Enrollment	1828	1848	1886	1789	1789	1824	1893	1990	1990
	Available Space	(302)	(322)	(360)	(263)	471	436	367	270	270
	Comments	See Text				Project Complete				
Wheaton HS	Program Capacity	2237	2237	2237	2237	2237	2237	2237	2237	2237
	Enrollment	2583	2684	2771	2700	2605	2647	2683	2685	2685
	Available Space	(346)	(447)	(534)	(463)	(368)	(410)	(446)	(448)	(448)
	Comments	See Text								
Charles W. Woodward HS	Program Capacity					2159	2159	2159	2159	2159
	Enrollment					0	0	0	0	0
	Available Space					2159	2159	2159	2159	2159
	Comments					Opens				

MCPS CIP Schedule

- Woodlin ES Major Capital Project - expected completion Jan. 2024
- MCPS Capital Projects Intended to Relieve Downcounty Consortium & Walter Johnson HS:
 - Kennedy HS Addition - completed Aug. 2022
 - Woodward HS - currently scheduled for completion as holding center 2024, reopening 2026
 - Northwood HS Addition/Upgrade - currently scheduled for completion 2026
- ➔ MCPS boundary studies typically start 18 months prior to when students will be reassigned.

MCPS Capacity Relief Candidate Clusters



MD Green School Certification - Where Are We Headed?

- Outdoor Wellness Walk Pilot - 1st Grade Team
- Seedling Sale Fundraiser (NextGenTrees USA)
- Woodlin Green Team - Andrea Littell
- STEM Day - **Volunteers needed!**
- Earth Day - **Volunteers needed!**
- Looking ahead to 2024 ...

joanna@portgood.org



GreenKids Schools



2023 SPRING SEEDLING SALE
Woodlin PTA Fundraiser
Begins on: Fri Jan 27, 2023
Ends on: Sun Feb 12, 2023

Why Participate?

- Create positive connections with nature by planting and growing native trees.
- Help us build our neighborhood's next forest community.
- Help fund our PTA programs!

Go to the NextGenTreesUSA Woodlin store page:
<https://nextgentreesusa.com/schools/code/md458823/>
or use QR code

School code: MD458823

Seedling Cost = \$10 each*
Pickup date TBD (in Mar-April)
* 65% of proceeds go to PTA

Two native species for sale:

Northern Red Oak
• MD Native (zones 3-7)
Fast growing & very durable. Full color Great shade tree and wildlife friendly.
Care: Easy to transplant and tolerant to urban conditions and wide range of soils. Grow 60-70 ft tall & 40-60 ft wide. Seedlings = 22-24 inches tall

Red Mulberry
• MD Native (zones 5-9)
Fast growing & very durable. Great shade tree and wildlife friendly. Berries are edible!
Care: Forgiving, adaptable, and tolerant to urban conditions and wide range of soils. Grow 50-70 ft tall & 40-60 ft wide. Seedlings = 12-20 inches tall

How to Participate:

1. Go to our [school store link](#).
2. Select your seedlings.
3. Optional: add additional donation for Woodlin PTA.
4. Buy your seedlings!
5. Pick up your seedlings (We will contact you in Mar-April)
6. Make a plan of where to plant. (We will share county resources.)
7. Share the experience & plant!

Questions? Contact Joanna at
joanna@portgood.org
(Woodlin PTA seedling coordinator)

Heritage Month Celebrations

Donna Washington - *Virtual Live Storytelling Tues. Feb. 7th, recorded link available until Monday 2/13*

Heritage Month Celebrations

Black History Month - February

Women's History Month - March

Arab American Heritage Month - April

Asian Pacific American Heritage Month - May

LGBTQ+ Pride Month - June

Hispanic Heritage Month - September 2023

Volunteers Needed! Contact: Christine & Jasmine

christine.lao@gmail.com

Jasmine.Hunt@gmail.com

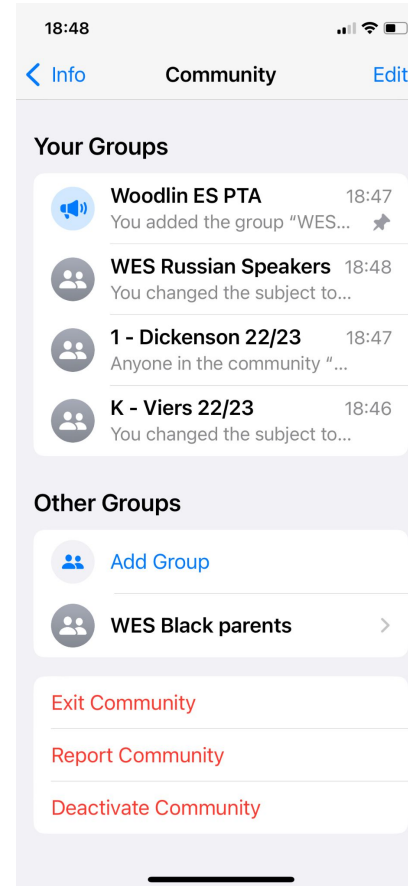
Expanding Access through WhatsApp

- Many, if not most of us, use WhatsApp already. WhatsApp usage is highest among many of the communities our PTA struggles to reach.
- Many ad-hoc WhatsApp groups for classes and bus stops exist already.
- WhatsApp's new "Communities" functionality would enable us to have a central school-wide PTA group for announcements, along with individual groups for each class, as well as for communities like Spanish speakers or parents of Black students.
- Moderation will be needed, for which we would need volunteers.

Expanded Access & Outreach

If you have thoughts or suggestions about using WhatsApp for our school, or about other ways to expand our outreach:

mikeyfranklin22@gmail.com





Geography Bee

Mission

To help out students explore the world around us, and to understand that where we live influences both how we live and how those before us have lived.

Concept

- Participation counts (Prizes! Fabulous prizes!)
- All the information for the bee is in the packet.
- Build foundational knowledge in 2023.
- Align with curriculum needs.

Execution

- 1: Preparation (PTA Team, Ms. Ott)
- 2: Packet Completion (teachers, students)
- 3: Packet Checking (PTA Team, volunteers?)
- 4: Packet Review (students)
- 5: Prelims (within classrooms)
- 6: Finals (within grades)

Prelims, Finals dates are flexible

Support Requirements

Build interest with students!

Google Classroom: helps us in absence of space

Cost Estimate:

Prizes	\$ 46	
Print 300 B&W	\$ 982 (stitch)	\$ 1316 (coil)
Print 300 Color	\$ 1148 (stitch)	\$ 1482 (coil)

GEOGRAPHY BEE CALENDAR

FEBRUARY

			1	2	3	4
5	6	7	8	9	10	11
				Packet Printing		
12	13	14	15	16	17	18
	Packet Delivery	Packet Distribution	Student Work			
19	20	21	22	23	24	25
Student Work						
26	27	28				
Student Work						

MARCH

			1	2	3	4
			Student Work			
5	6	7	8	9	10	11
Student Work						Packet Collection
(T) Packet Checking				17	18	
			Packet Delivery	Packet Return		
19	20	21	22	23	24	25
STEM DAY	Student Review					
26	27	28	29	30	31	
	Student Review		PRELIMS			

APRIL

						1
2	3	4	5	6	7	8
9	10	11	12	13	14	15
				FINALS		
16	17	18	19	20	21	22
23	24	25	26	27	28	29
30						

Upcoming Events

Yearbook *volunteers needed to help coordinate the 2022-2023 yearbook*

Skate Night *Saturday February 25, 2023*

GEO Bee *coming soon, with finals in April 2023*

STEM Day *Sunday March 19 at Grosvenor*

Earth Day *Saturday April 22 at Grosvenor*

Spring Fair *Saturday May 6 at Grosvenor*

Enjoy games, activities, and performances at Grosvenor!

****The PTA plans to sponsor buses to all PTA activities held at Grosvenor to ensure all families have the opportunity to attend****



Q&A

And thank you for joining us!