

# Woodlin Elementary Safety and Security Updates



# EMERGENCY PREPAREDNESS UPDATES

The State of Maryland requires six annual mandated drills:  
lockdown; shelter-in-place; evacuation; reverse evacuation;  
severe weather; drop, cover, and hold (earthquake)



**LOCKDOWN**



**EVACUATION**



**REVERSE  
EVACUATION**



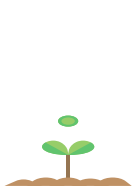
**SHELTER  
IN PLACE**



**DROP, COVER, AND  
HOLD SHELTER**



**SEVERE WEATHER  
SHELTER**



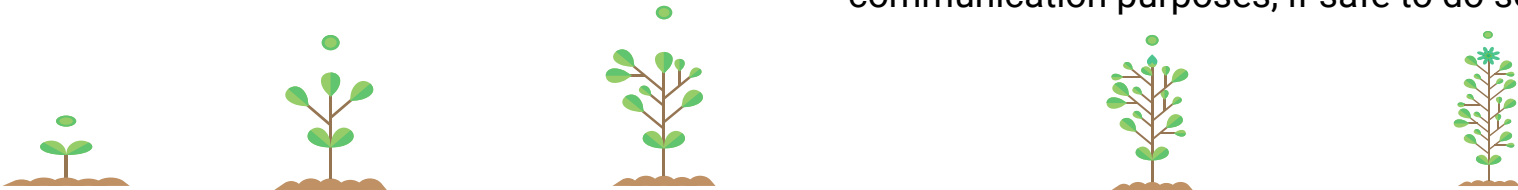
# EMERGENCY PREPAREDNESS UPDATES

**Shelter In Place** is in response to danger in the school community or near school property. May also be used to address a medical emergency/safety situation.

- Staff lock and monitor all exterior doors
- Classroom instruction continues
- Staff takes attendance
- Hallway passes/movement limited
- Remain in current classroom until shelter is lifted
- Administration will make announcement to provide safety information

**Lockdown** is an emergency response to a life-threatening imminent danger in or around school grounds. Exterior doors and interior classroom and offices are immediately locked and secured.

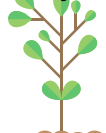
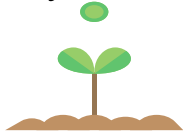
- Sweep or can the immediate area outside the classroom.
- Instruct students to move to the safest corner of the room away from doors and windows
- Lock & secure doors
- Cover door windows and close blinds
- Turn off lights
- Silence all electronic devices
- Utilize Chromebook/laptop for attendance and communication purposes, if safe to do so.



# EMERGENCY PREPAREDNESS UPDATES

**As a parent/guardian, what can I do to support student safety during a lockdown?**

- Keep emergency contact information updated in Synergy so that we can keep you informed.
- Have ongoing conversations with your child regarding school safety and emergency preparedness.
- Encourage your child to take drills seriously and ask staff any questions that will help them be well prepared.
- Understand that law enforcement and/or emergency responders will arrive onsite and take command of emergency situations.
- Stay calm and reassuring during any communications with your child during an emergency situation.
- Encourage your child to follow the directions of school staff in order to prevent confusion or added safety risks.
- Should school officials request parents to pick up their children, please have identification with you so that your child can be released to your custody.



# EMERGENCY PREPAREDNESS UPDATES

How and when will I receive communication during a lockdown?

- You will receive information as soon as possible after the initiation of a lockdown.
- Our goal is to communicate within 20 minutes, with updates as frequently as possible.
- This initial information will be shared utilizing the ConnectEd system via phone call, text message, and email.



# EMERGENCY PREPAREDNESS UPDATES

## How will I receive communication after a lockdown?

- You will receive a follow-up communication providing detailed information regarding the emergency and resources available to students/parents.
- We recognize the importance of two-way communication. Please know that if you or your child has serious concerns in response to an emergency or crisis, contact your child's school directly for information and guidance



# EMERGENCY PREPAREDNESS UPDATES

What types of **support** will be available to my child following emergency situations that may potentially impact their well-being?

- Specialists in mental health, specifically recognizing and addressing trauma, will partner with the school administration to provide the appropriate services.
- Students will have full access to their counselor to support their social emotional well-being.
- We will continue to provide communication to the community as we verify information.
- Teachers will demonstrate flexibility with academic assignments such as tests/quizzes.

